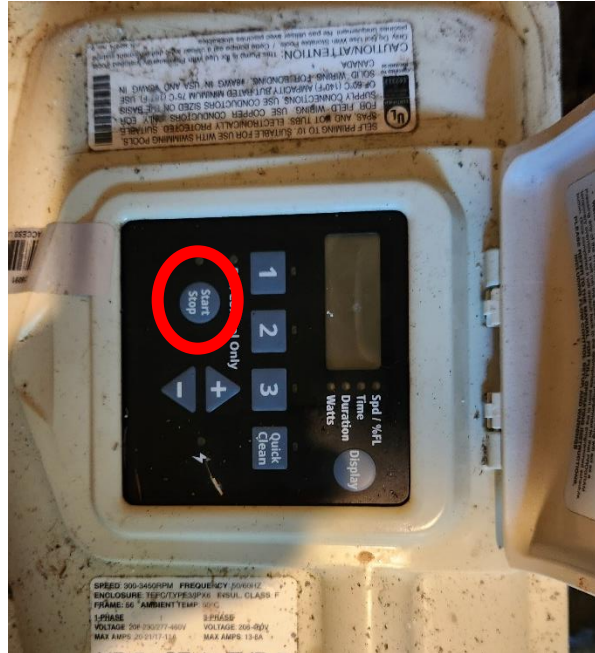


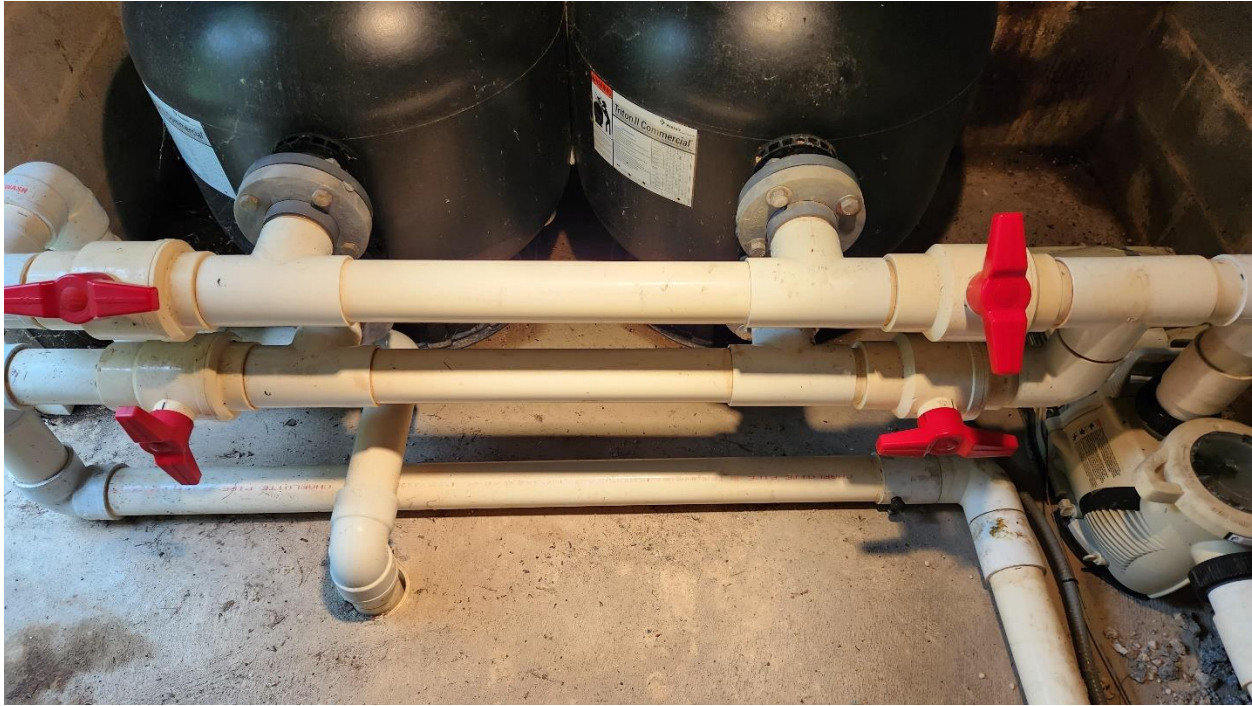
## Backwashing Pool

The pool **MUST** be back-washed

- whenever the pressure gauges reflect 20 pounds of pressure or more
- or**
- after using the pool over the week (end) prior to leaving.



**1. Open the cover to the pool pump and press the START/STOP button. Wait for pump to turn off.**



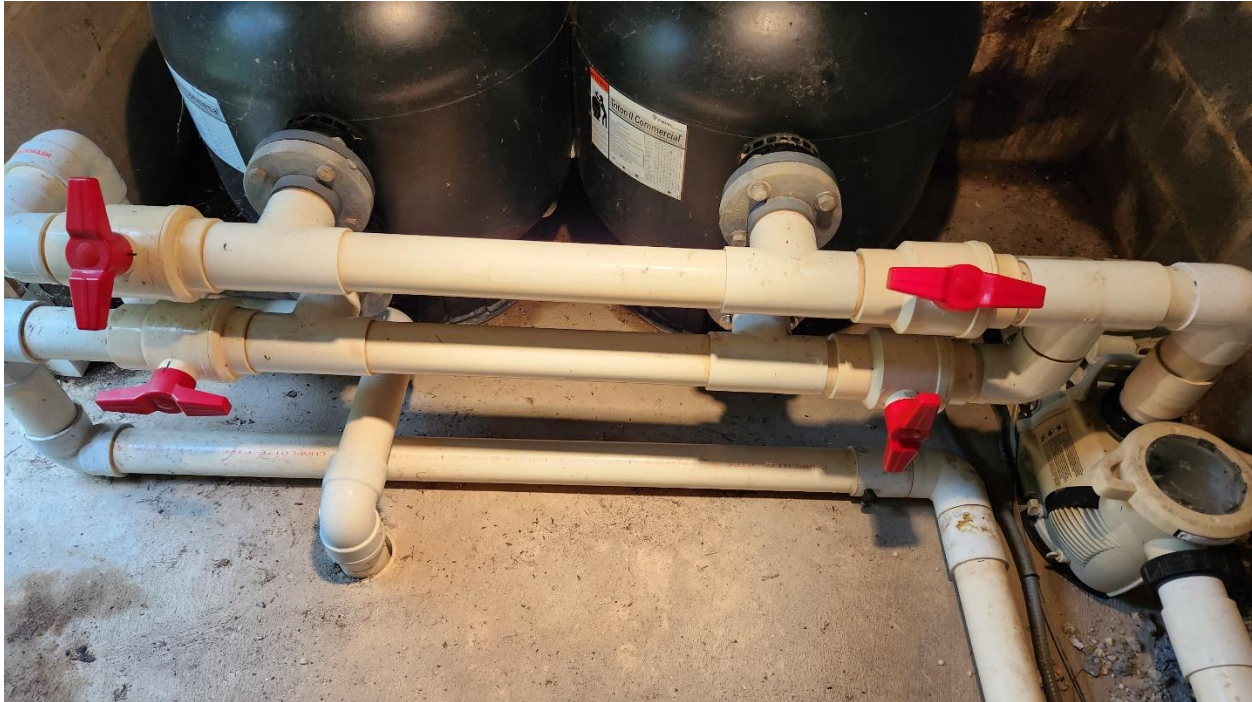
**2. Reverse the 4 BACKWASH VALVES (pictures show valves reversed.)**

---



**3. Wait 30-60 seconds while water begins to flow by gravity then turn POOL PUMP to the ON position by pressing the START/STOP button. Usually there is a minor delay in the pump booting up. (Look out the door, and you will see (generally) cloudy water pumping out. Backwashing takes 2-3 minutes. Once clear water runs, turn the pump off by pressing the START/STOP button)**

---



**4. Return 4 BACKWASH VALVES to normal (pictures show valves at normal.)**

---



**5. Turn POOL PUMP to the ON position by pressing the START/STOP button. Usually there is a minor delay in the pump booting up.**

---

**6. Review pressure gauges, they should read around 20 pounds of pressure or under. If significantly over 20 pounds of pressure, re-backwash the system.**



# Cleaning the Filter Strainer

If you notice a lot of debris in the filter strainer or the waterfall is no longer running that is a good indication the filter strainer is too full to allow enough water pressure to pass through. Cleaning the filter strainer will solve this issue.



**1. Open the cover to the pool pump and press the START/STOP button. Wait for pump to turn off.**

---



**2. Close the Main Drain (MD), Skimmer line and Return line (closed position shown)**

---



- 3. Close the WATERFALL RETURN LINE (to close waterfall line, handle should be loosened and at 9 a.m., then re-tightened)**
- 



- 4. Open the strainer filter housing (turning counter clockwise).**
-



**5. Remove the interior plastic strainer bucket (there may be pool of water) and clean it out. NOTE: Pay attention to where the hole in the strainer is lined up to the pipe).**

---



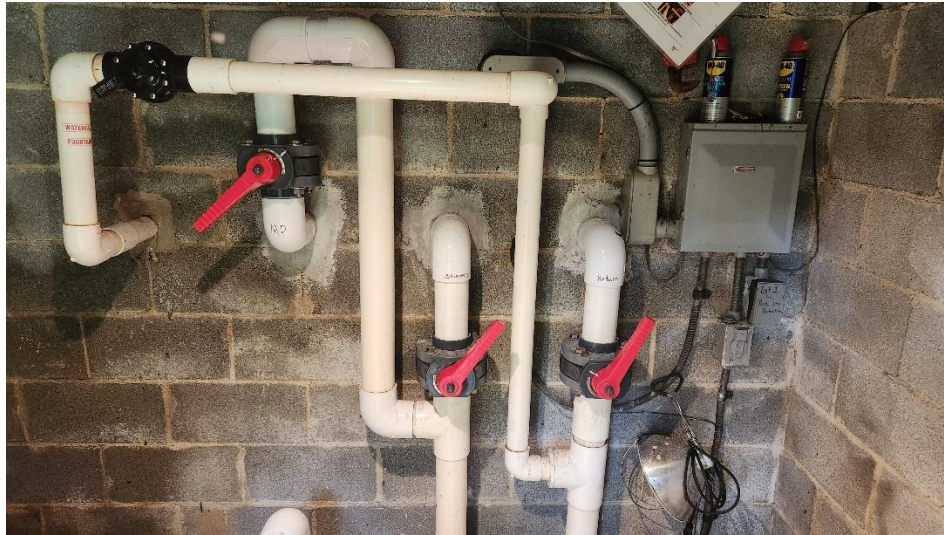


**6. Place the cleaned/rinsed strainer back in the strainer housing. Ensure the hole in the strainer matches the inlet pipe shown**

---



**7. Screw the strainer filter cover back on (it is indexed) in a clockwise rotation.**



**8. Open the Main Drain (MD), Skimmer Line and Return Line to the position shown in photo**



**9. Open WATERFALL LINE and re-tighten lock screw (handle should be at around 8:00 a.m.)**

***IMPORTANT:*** With the waterfall line in the open position, ensure the waterfall is not overflowing. If it is, adjust the line to a more closed position to throttle water.)

---





**9. Turn POOL PUMP to the ON position by pressing the START/STOP button. Usually there is a minor delay in the pump booting up. Close the cover pump cover, ensure the filter housing is not leaking.**

---